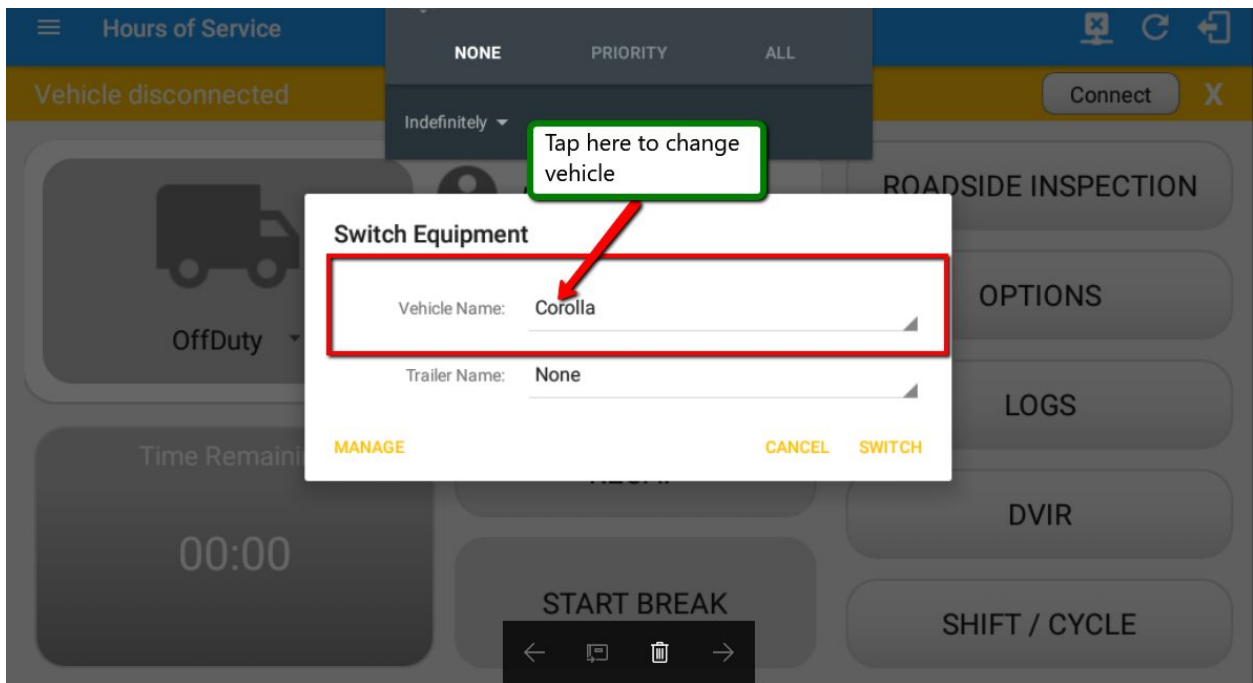
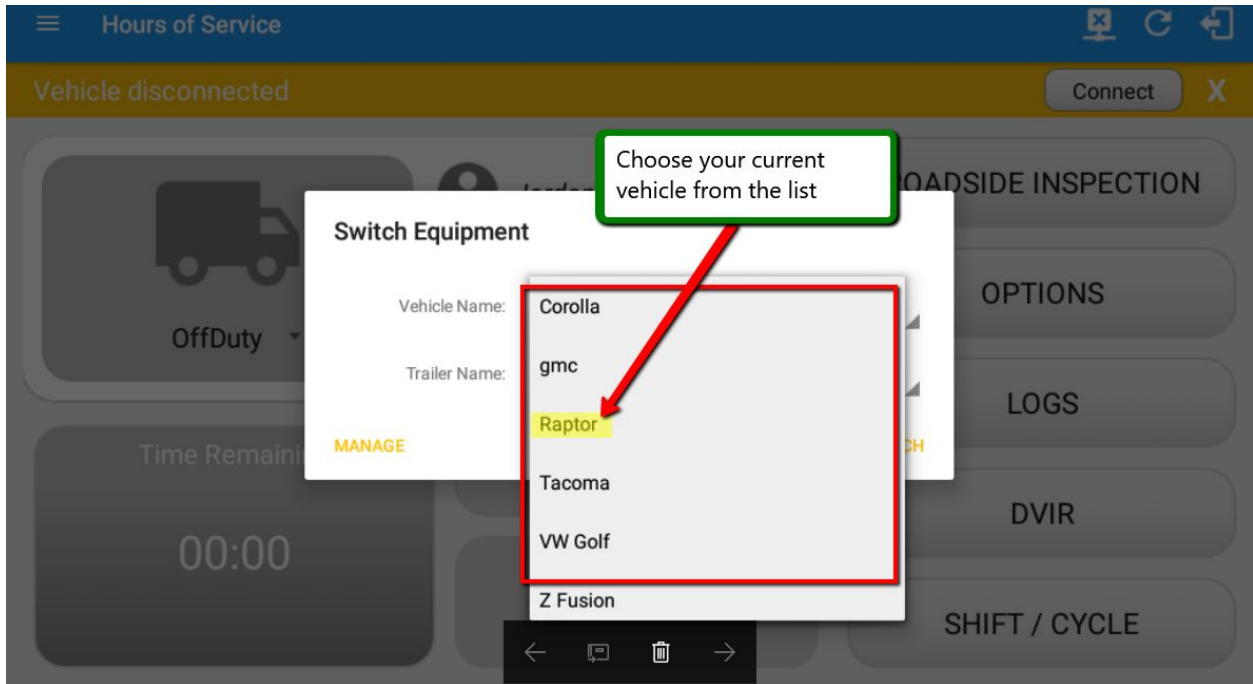


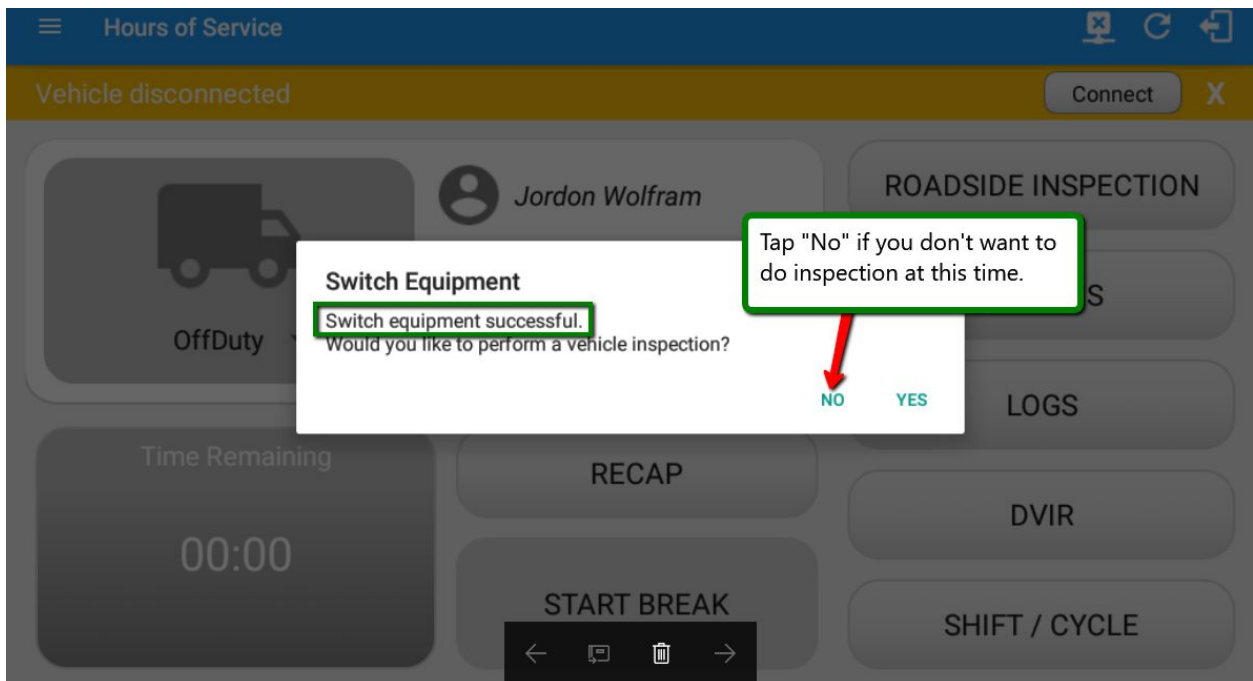
1) Click on the vehicle icon to bring up options to change the vehicle. (image above)



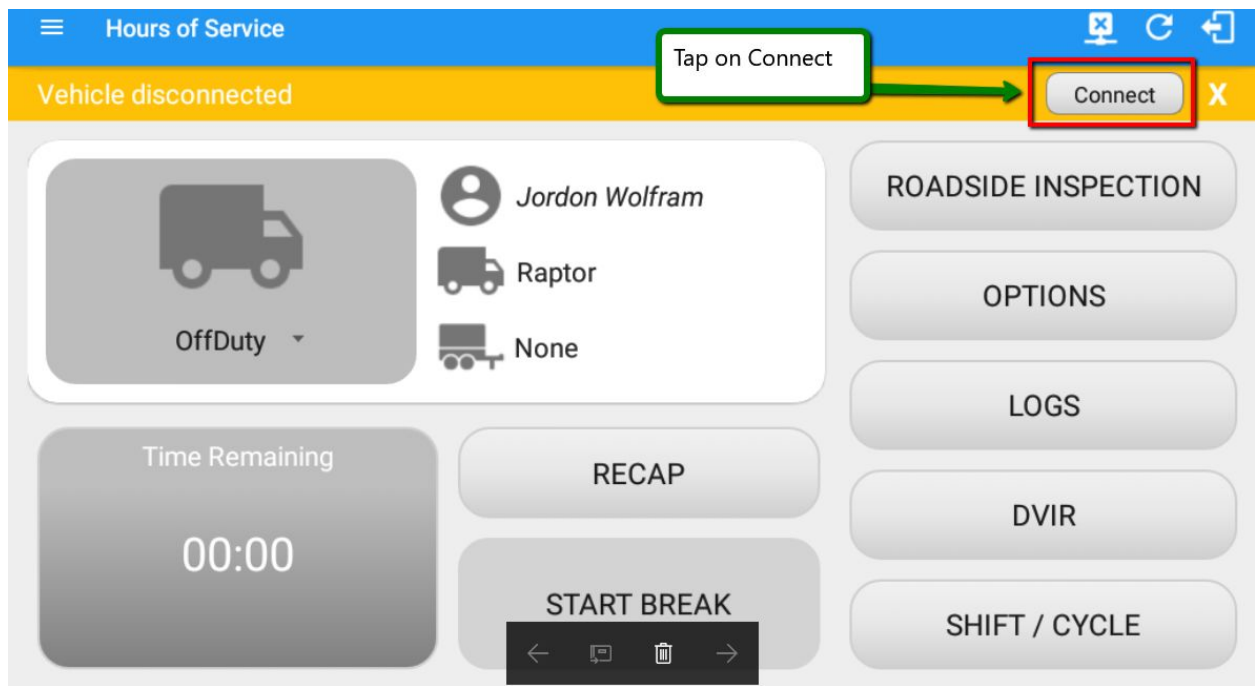
2) Click on current vehicle name to bring up list of other vehicles to connect to. (image above)



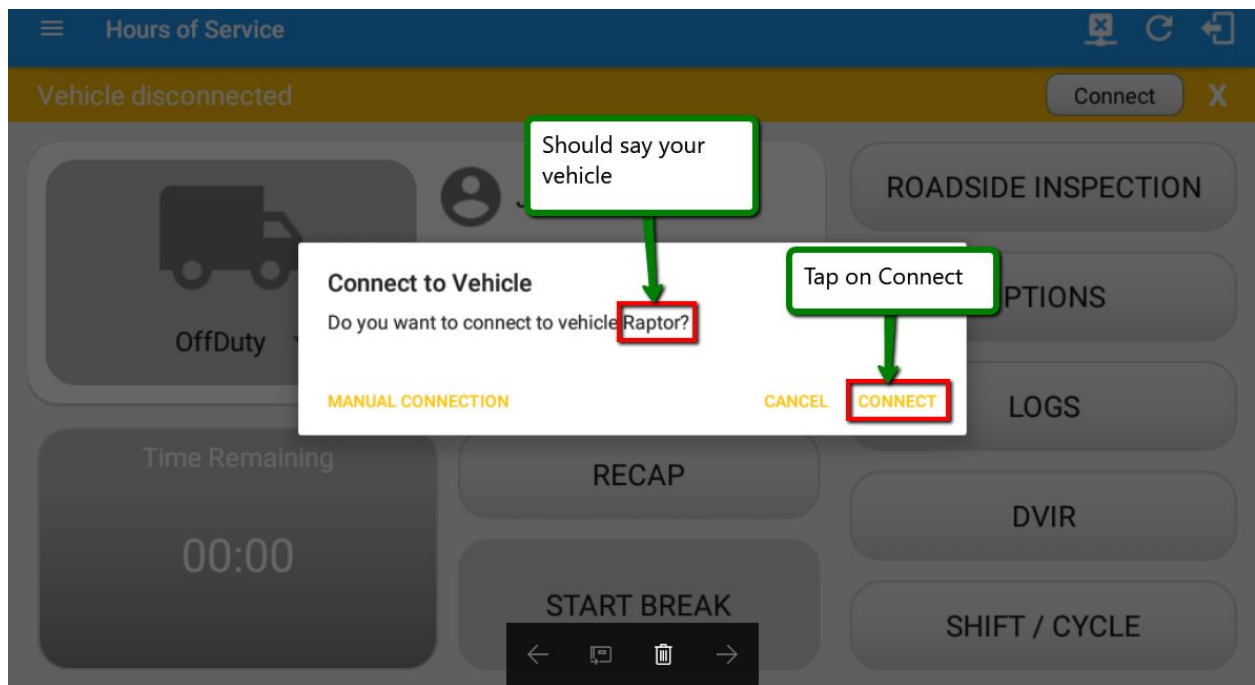
3) Find your vehicle in the list and tap on it to select it. (image above)



4) You should see the “Switch equipment successful” message after selecting your vehicle. (image above)



5) Tap on Connect to make sure you connect to your vehicle's bluetooth. (image above)



6) Make sure it says your vehicle name, then click "Connect" to pair with the tracking device. (image above)